

# Sensor Adaptor



## PLASSON Sensor Adaptor

PLASSON Sensor Adaptor provides a dedicated solution for connecting the sensor to the piping system, eliminating the need to apply improvised connections with high risk of leakage. PLASSON's Sensor adaptors enable quick and easy integration of various sensors onto a wide range of PE pipe diameters.

## Universal

Two Saddles cover extensive range of pipe diameters:

- Main pipe 110mm (4" IPS ) up to 400mm (16" IPS) – Catalogue numbers

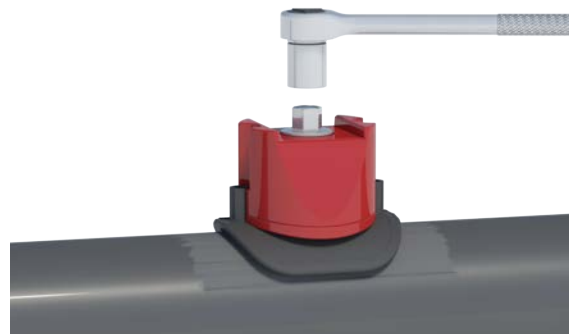
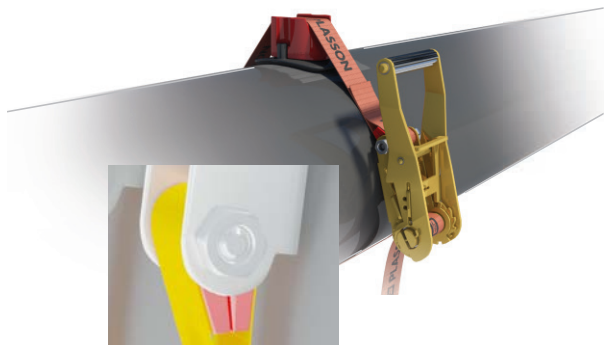
Female Thread diameter	1/2"	3/4"	1"
ISO 7-1 Rp brass thread	493803400005	493803400007	493803400010
ISO 7-1 Rp stainless Steel thread	493803400005S	493803400007S	493803400010S
NPT stainless steel thread	4938T3400005S	4938T3400007S	4938T3400010S

- Main pipe 450mm (18" IPS ) up to 1200mm (48" IPS) – Catalogue numbers

Female Thread diameter	1/2"	3/4"	1"
ISO 7-1 Rp brass thread	493803900005	493803900007	493803900010
ISO 7-1 Rp stainless Steel thread	493803900005S	493803900007S	493803900010S
NPT stainless steel thread	4938T3900005S	4938T3900007S	4938T3900010S

## Fast and simple installation

The Sensor Adaptor is designed to deal with the challenges of connecting to large PE pipes by obtaining full contact along the welding area. Challenges may be caused by ovality, deformation resulting from aging, handling and storage. Using one of the two unique yet simple clamping device options (strap or bolt) ensures the correct welding of the Sensor Adaptor.



Correct tightening force indicator on strap mechanism

## Clamping Tool for Sensor Adaptor – Catalogue numbers

Pipe diameter mm	Description	Catalogue number
110-1200mm (4" IPS - 48" IPS)	Full set version	29144.4706.000
110-1200mm (4" IPS - 48" IPS)	Version without strap	29144.4706.001

